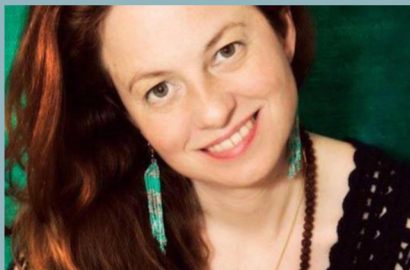




Creative ways of Business Development with 'Energy Communications'

Amanda McGregor has been working with a holistic approach in coaching, clinical practice in development, intuitive realisation in business for many years, helping people at all levels develop a business culture, using leadership skills, vision, sovereignty, communication and development. She has developed a series of strategies that enable a delivery of objectives using a consultancy and training approach, that enable an assured sense of achievement. This creates high levels of performance new business, investments, directing, management, collaboration and a sense of satisfaction in experience.



'The universe knows the answers we just have to ask the right questions.'

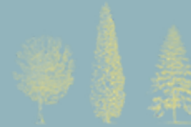
Creative ways into 'Energy Communications' with Amanda McGregor



Alternative Planning

A way of developing businesses, communities and centers through visualisation, physical intervention and the channeling of intelligence from the universal body of consciousness.

Successful projects have included a new vision for Leitchworth Garden City, a security system for a South London Gallery

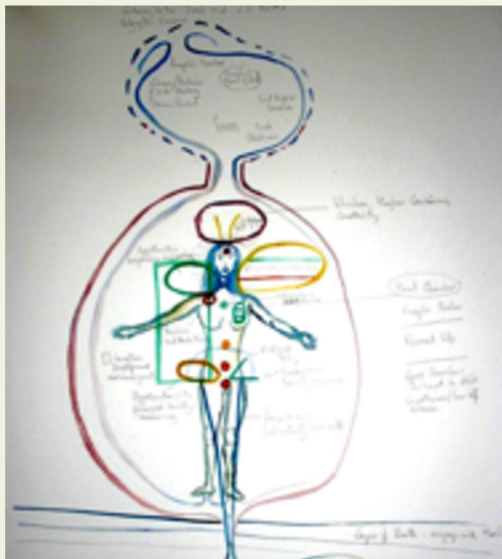


Alternative Planning is a fun way of bringing fresh perspectives and ideas into the environment and work place. It is helpful to motivate a team, bring inspiration, and help create working dynamics amongst staff. If there is a block on the flow of a project or in staff relations A.P. is a way of dealing with the situation safely and effectively, encouraging a more productive environment. Alternative Planning can be used for projects, training and for the well being of staff.

Whilst acting as a channel working with 'Creation' Amanda works with visions, energy psychology, energy communications to increase productivity. These expanded states of awareness facilitate heightened skill sets, so in relation we work together to connect with product and persons activating development to bring your product or service to the forefront of the industry. Amanda channels intelligence, opens up performance levels, develops all types of products and I.P. and works with expanded consciousness, actualising and manifesting the information and development of business, product

and communications. Amanda works with visuals, strategies, communications, company dynamics, creating story boards, characters, objects and embraces style.





strong sense of working purpose amongst infrastructure and a respect in product globally.

Automatic Writing

Useful for writers and 'out of the box' freethinkers to help them come further in to their power, also unearths branding and communications, from an subconscious but essential directive.

Sound Vibrations

How does the names of products and company vibrate, this creates a tone in the world, that resonates with people, the ideal is to bring harmony and rhythm as this is attractive to people.

The Role of Visualisation and Vision

Sometimes words are too linear to enable a clear objective that works for the benevolence of the company. By using 'vision' we can work with universal consciousness and collective thinking to encourage a vision that many people can reference and work towards as an objective. Amanda catalyses visions in clients to enable objectives objectives and pathways, with strategies and phases clearly defined.

Kinesiology with staff dynamics

Assessing intentions to create priority lists and make sure time management is addressed effectively using kinesiology, a skill used in finding 'true' agenda's that serve the company and creative ambitions efficiently.

Amanda teaches people to be the 'Creator' in manifestation and vision. This way of operation suits people with an asserted connection to philosophy in business and an interest in benevolence in operation.

Remote Viewing is used to find out what's going on in individual performance. Popular with human resources and investment deals, the process checks in with the motivations of people, their strengths weaknesses and limits, a powerful way to see direction in teams and business infrastructures, if someone is acting on intention, insecure or if there are any hidden agendas. Remote viewing helps to create positive pathways forward.

Raising Consciousness using Design

Speaking to consumer, making sure the communications are 'speaking' and 'calling' clients or consumers.

Integrity of the company **Aligning intentions with a strong sense of value throughout infrastructure, to create a stable, secure and dependable business infrastructure with consistent client/consumer relationships. Responsibility and Respect in Creation Looking at impact of company on world, this area of consciousness, helps to define**

Coaching for Internal Communications
Communication and awareness understanding relationships, motive's, agendas, pathways and directions.

- To enable strong collaborative infrastructures.
- Creating internal communication flows, on an advanced level.
- Conflict Resolution – Assessing underlying agendas and priority systems in relation to personal value and objectives, integrating factors to create a pathway of resolution.
- Aligning Visions – Bringing teams into synchronicity.
- Aligning Development – Creating conscious pathways to move teams forward.
- Presentation Skills, Narrative, Story Board, Archetypal Identity, Role Playing, Body Language, Expression, Understanding different Communication styles.

Team Building with Dependability - Enabling trusted delivery through the understanding of controls, limits and creating limitless options in performance through supporting personal development.



**Company Strategies & intentions;
Clearing pathways through goals and objectives, change management, directing and enabling new pathways to create opportunities and new business.**

- . Corporate or Business I.D. (Concepts and Company Names)**

- . The Vibration of Brand Names Used to raise awareness to product, usage and market, popular with Start Ups.**

- . ‘Downloading’ from Source and other energy vibrations enables the universe to guide and God. Sovereignty/universal consciousness to lead. Using creative ways to inspire through allowing a channel of inspiration to work thorough people.**

- . Development of Delegates One to one Surgeries can provide an opportunity to give feedback and healing in a non-judgmental way, so as to help personal develop stronger communication skills, find security, become clearer on intentions, build on strengths and be more effective in management and delegation.**

Amanda is a channel for ‘Creation’.

working with visions, energy psychology and energy communications to increase performance, collaboration and productivity.

These expanded states of awareness facilitate highly attuned skill sets, so in relation Amanda can connect and use development skills with a clients already established experience in the creative industry, business or simply enhance the relationship of the market to bring a strong connection and level of enjoyment. Amanda channels intelligence, opens up performance, develops all types of products and I.P., through working with expanded states of consciousness, manifesting the visions, communications and developing the business, product and communications. Amanda works with visuals, strategies, communications, company dynamics, infrastructure, communications, style, story boards, characters, objects, designs, embracing people, embraces people. Creating a Vision Creative product, business I.P. product, directing, for film, fashion, theatre, Interior design, Communications, Media, Workbooks.

Very powerful Holistic approaches for Human Resources using remote viewing.

A popular and effective way of seeing people's strengths and limits so as to enable support and direction with a constructive use of skills.

Psychometry of objects: Looking at the presence, branding and milieu. How product , environment and relationship work together.

Bringing philosophy to creative entrepreneurship and business, enables collective consciousness to work on a ‘universal level’ empowering an enlightened approach to launch products and people on an international scale. Using visualisation, coaching ‘Energy Communications’, integrated consciousness and creativity.

Working with developed understanding of consciousness, gives your project or company the lift it needs to fly. Dynamic ways through engaging with the energy frequencies or ‘pathways’ of the project and how they connect to the world. Residential courses, seminars, workshops and meetings are available, we use a specific office/studio/ workshop space that works for the project.

www.insightforlife.co for focused development, communications and training work.

**Amanda works with groups, individuals in and out of the office.
07939512837**

amandamcgregor333@gmail.com

